

## ABOUT ACE HOTEL SYDNEY

Our very first spot south of the equator, Ace Hotel Sydney lives in a rejuvenated, hundred-year-old Heritage Federation Warehouse building — home to the first kiln discovery in Australia — nestled against the edge of the CBD in Surry Hills.

## ACCOMMODATION

The property offers 250 guest rooms and suites over 18 levels, with 10 accommodation categories ranging from our cosy Small Rooms (19sqm) all the way up to our Ace Suite (79sqm).

## DINING

Ace Hotel Sydney is home to four distinct food and beverage venues:

**LOAM**, all-day dining restaurant offering fresh, sustainable fare

**Good Chemistry**, laneway cafe with full coffee and cocktail service

**Lobby Bar**, open from midday to 1am, offering craft serving drinks and bar snacks, with live DJ's on Thursday through Sunday

**Kiln**, our dynamic rooftop restaurant rooted in contemporary Australian cuisine and something we're calling Italian-ish, with nods to Japan and Southeast Asia peppered throughout the menu. situated 18 stories above Surry Hills

## LOCATION

Ace Hotel Sydney sits right on the border of the Sydney CBD and Surry Hills, located at 47-53 Wentworth Street, Sydney.

## CONTACT DETAILS

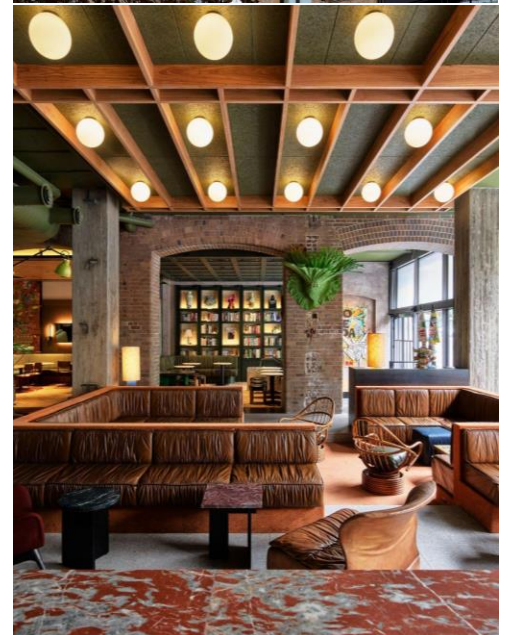
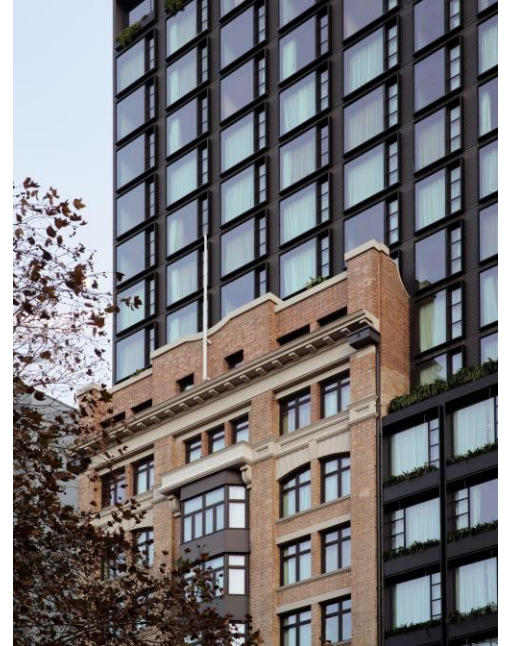
ACE HOTEL SYDNEY

T: +61 2 8099 8799

E: [events.syd@acehotel.com](mailto:events.syd@acehotel.com)

W: [acehotel.com/sydney](http://acehotel.com/sydney)

I: [instagram.com/acehotelsydney](https://www.instagram.com/acehotelsydney)



## EVENT SPACES

Flexible enough to suit all sorts of social situations — day meetings, weddings, product launches, birthday parties, whatever — our events spaces include a pair of multifunctional medium-sized rooms (Clay and Tyne) good for gatherings of about 50 people, plus a great big space (Brick) that can manage meet-ups of 150 guests.

## VIRTUAL TOUR

[Accommodation](#) - [Event Spaces](#) - [Kiln](#) - [Good Chemistry](#)

## CAPACITY CHART

| EVENT SPACE | CABARET | KINGS TABLE | BOARDROOM | U SHAPE | THEATRE | CLASSROOM | ROUNDS | COCKTAIL | SOM / SOF                | CEILING HEIGHT<br>M / FT |
|-------------|---------|-------------|-----------|---------|---------|-----------|--------|----------|--------------------------|--------------------------|
| BRICK       | 72      | 52          | 40        | 38      | 120     | 63        | 90     | 160      | 130 sq m<br>/ 1400 sq ft | 3.2m / 10.5ft            |
| CLAY        | 24      | 22          | 22        | 22      | 46      | 36        | 40     | 50       | 70m / 753 sq ft          | 3.1m / 10.2ft            |
| TYNE        | 24      | 22          | 22        | 22      | 46      | 36        | 40     | 40       | 66m / 710 sq ft          | 3.1m / 10.2ft            |

## KILN

Perched atop the hotel is Kiln, panoramic views mix with the ambiance designed by Fiona Lynch. Kiln reflects an elevated sense of place in a setting built for casual attitudes. Two terraces with retractable roofs allow for open-air dining, while our more relaxed interior dining nooks welcome guests in all weather conditions. We can offer exclusive use for events for lunch and dinner up to 108 seated or 200 cocktail style.

