



Legendary service Inspired event spaces

At Sheraton Grand Sydney Hyde Park, we're rethinking ways you can connect and create. From seamless prep and expert support to flexible layouts and cutting-edge technology, we provide everything you need for productive meetings and successful events.

Dream destination

The perfect venue for motivating a successful team or hosting an elegant celebration, Sheraton Grand Sydney Hyde Park combines the ultimate in technology and style.

Accommodating 10 to 1,600 guests, Sheraton Grand Sydney Hyde Park is Sydney's most desirable event destination. An abundance of natural light throughout, high speed wireless internet access, outdoor terraces and dedicated concierge services guarantee the most productive meetings and truly unforgettable events.

Sample local flavour

Our expert culinary team craft customised menus to inspire the most discerning of diners. We integrate local specialities and gastronomic innovation into our action stations, bountiful buffets, elegantly plated meals and themed breaks.

And with on-site versatile food and beverage venues and in-room dining, your attendees will always be able to find the perfect bite.

Groups and private dining at Sydney Common

From weddings, to corporate dinners, parties and milestone celebrations we have a contemporary space, perfect to accommodate your next event.

Accommodating drinks and canapés through to a private hire, the venue's expansive windows and atrium seamlessly integrate the natural beauty of Hyde Park, allowing the greenery to become the backdrop of the restaurant, integrating its peaceful surroundings with all the comforts of a five-star venue.

Sydney Commons private dining room can sit up to 16 guests whilst the venues semi private dining spaces are ideal for larger groups to book for lunch or dinner.

Get more from your stay

Grand gestures and modern conveniences ensure your attendees feel at home at Sheraton Grand Sydney. Whether maximising their time with smart productivity solutions in the Sheraton Club, taking a moment to unwind in the Day Spa or rejuvenate in the Health Club, our award winning facilities guarantee that guests feel energised and focused to achieve more from your event.

Centrally located in the heart of Sydney's retail and business districts, Sheraton Grand Sydney is the perfect launch pad for exploring Sydney's iconic attractions, open-air shopping malls, fine restaurants, cafes, bars and destinations that define this vibrant city.

Reap the rewards

Marriott Bonvoy Events rewards is designed with meeting planners in mind, allowing members to earn points or miles as well as Elite Night Credits on qualified events — in addition to everything they earn on their personal stays.

Our world-class loyalty program invites our clients to experience free nights and endless experiences at 30 extraordinary brands worldwide.



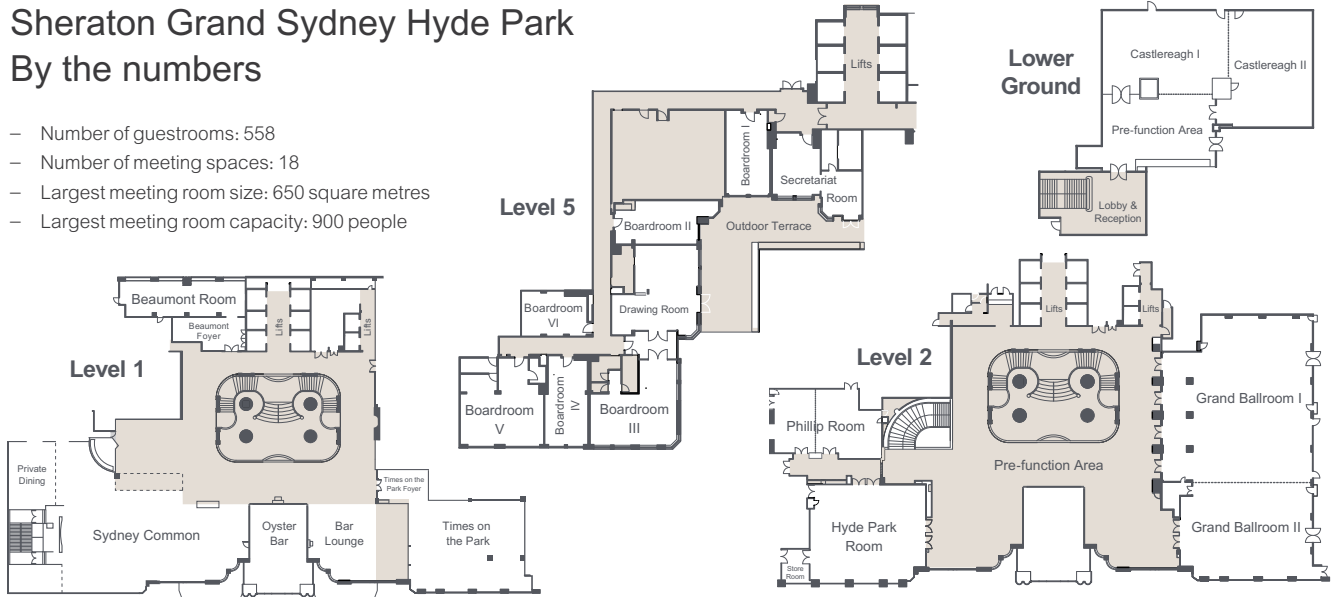
SHERATON GRAND

Sydney Hyde Park



Sheraton Grand Sydney Hyde Park By the numbers

- Number of guestrooms: 558
- Number of meeting spaces: 18
- Largest meeting room size: 650 square metres
- Largest meeting room capacity: 900 people



Room dimensions and seating capacity

Sheraton Grand Sydney Hyde Park is the perfect venue to create an extraordinary experience.

Features include

- One of Sydney's largest conference hotels with 18 flexible meeting rooms accommodating 10-1600 guests.
- Pillarless Grand Ballroom caters for up to 900 theatre style and 550 banquet style
- Smartest meeting space in Sydney with full HD vision system, Meyer sound system, high speed wireless internet, interactive screens and Apple TVs
- Meetings on 5 offers private boardrooms, outdoor terraces and Meeting Concierge Services
- Encore Event Technologies, Australia's leading event staging company is the onsite partner of Sheraton Grand Sydney Hyde Park

Room	Area m ²	Height m	Theatre	Classroom	Cocktails	Banquet (ovals)	Dinner Dance	Boardroom	U-shape	Cabaret 6 pax	Open Ended 8 pax	Exhibitions Booths 3m x 2m
Grand Ballroom	650	4.1	900	360	700	550	450	-	-	270	400	40
Ballroom I	420	4.1	500	200	400	350	250	-	-	180	280	24
Ballroom II	230	4.1	230	120	300	200	120	-	-	90	100	12
Hyde Park Room	180	2.6	220	126	200	150	110	36	45	90	120	10
Phillip Room	122	2.6	100	60	80	90	-	24	33	54	72	4
Phillip Room I	48	2.6	40	36	20	30	-	21	15	-	16	-
Phillip Room II	74	2.6	60	48	60	50	-	21	21	30	40	-
Level 2	1402	2.6	-	-	1200	-	-	-	-	-	-	22
Beaumont Room	90	2.7	80	39	80	60	-	30	27	36	48	-
Castlereagh Room	265	3	200	114	250	130	120	-	-	72	104	-
Castlereagh I	112	3	90	54	70	60	-	33	30	36	48	-
Castlereagh II	105	3	90	60	70	60	-	27	30	36	48	-
Boardroom I, II, IV	35	2.5	-	-	-	-	-	12	-	-	-	-
Boardroom III/ & Terrace	68	2.5	-	-	50	-	-	22	-	-	-	-
The Secretariat	2.4	2.5	-	25	-	-	-	15	-	-	-	-
Boardroom V	38	2.5	40	27	30	40	-	22	21	24	32	-
Boardroom VI	29	2.5	150	90	150	120	80	36	30	72	96	-
Times on the Park	195	2.4	150	90	150	120	80	36	30	72	96	-
Sydney Common Private Dining	2.6	2.6	-	-	-	16	-	-	-	-	-	-